



TOPICS IN **SMART** CITY Fundamental and Applications

Intelligent Robotic

- Delivery Robot
- Disinfection Robot
- Cleaning Robot
- Customized
- Sales and Marketing
- Maintenance and Support
- Technology transfer/Training
- Partnership

Geospatial (GIS)

- Technology R&D and Application
- Dashboard/Platform Development
- Database/Big Data and Integration
- Experience Gallery/Command Center



STEM Education (STREAMLAB 4.0)

- Robotic Arm (Dobot)
- Humanoid (LEJU Aelos)
- 3D Printing & 3D Modelling Software
- Augmented Reality (AR)
- Laser Engraving
- DIY Mini Projects
- Computer Vision (AI)
- Automation
- Programming (Java,Phyton,ROS,Block)
- Hardware (Arduino, Raspberry, ESP32..)
- Training and Sharing Knowledge

Urban Farming

- Hydroponic system
- Monitoring system
- AI and IoT Development
- Sales and Marketing

Smart City

- Event showcase
- Partneship/Consortium collaboration
- Product Talk/Technology sharing/Consultancy
- Grant,Tender and paperwork
- Course/Knowledge gathering

Research and Development

- R&D matching grants
- AI, Robotic, IoT and Smart City components
- Collaboration and partnership
- Technology/Service provider

Training and Consultancy

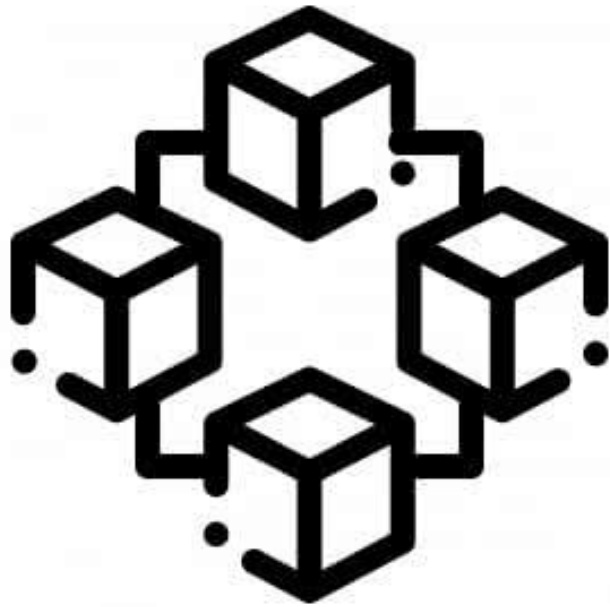
- Industrial panel jury (Expo/FYP/Competition)
- Digital-Entrepreneurship
- Internship programme/Talent Development
- University-Industry visit
- Corporate Sosial Responsibilites (CSR)
- Environmental, Social, and Governance (ESG)
- Knowledge Sharing/Consultancy

SHARING is CARING



I D E A
GENERATOR

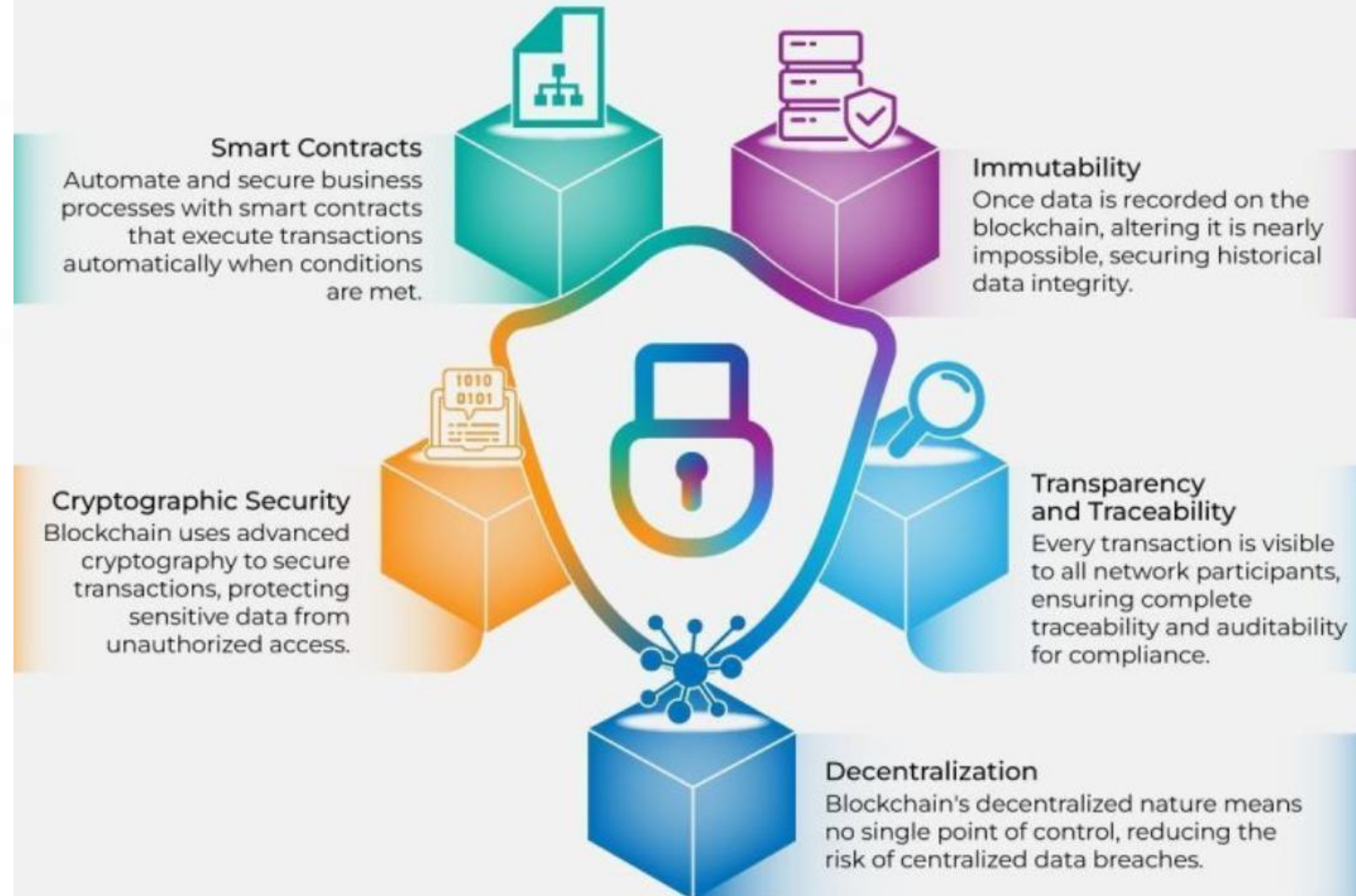
CTSB	Name	Topic
JB	Ts. Yusuf	How to Use Blockchain for Enhanced Data Security
KL	Faizul	THE RISE OF SMALL LANGUAGE MODELS (SLMs): The Future of IT Efficiency – Faster, Private, & Cost-Effective
JB	Wan	THE TRUTH ABOUT EMOTIONS



Blockchain enhances data security through decentralization, immutability, cryptographic protection, smart contracts, and transparent traceability. Together, these features prevent unauthorized access, reduce tampering risks, automate secure transactions, and ensure reliable, auditable data integrity across distributed networks.

How to Use Blockchain for Enhanced Data Security

Using Blockchain for Data Security means employing a decentralized and immutable digital ledger system to safeguard business transactions and ensure data integrity, enhancing security measures against unauthorized access and manipulation.



THE RISE OF SMALL LANGUAGE MODELS (SLMs):

The Future of IT Efficiency – Faster, Private, & Cost-Effective

WHAT ARE SLMs? (Special Forces of AI)

LARGE LANGUAGE MODELS (LLMs)

100B+ Parameters
Public Cloud / API only
High Cost (Per-token)
Variable Latency
Data Leaves Network



SMALL LANGUAGE MODELS (SLMs)

100M – 15B Parameters
On-Prem / Edge / Local
Low Cost (Sunk Hardware)
Instant Latency
Zero-Leakage Privacy

WHY IT MATTERS FOR IT STAFF



Data Sovereignty & Security
Run entirely within firewall. Keep sensitive logs, code, and docs private. No developer IP leakage to public web-chats.

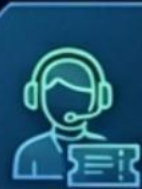


Infrastructure Cost Control
Stop monthly API bills. Utilize existing enterprise hardware, mid-range GPUs, or high-end CPUs via quantization.

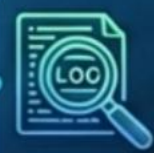


DevSecOps & Automation
Integrate AI directly into CLI tools, pipelines, and log parsers without cloud-roundtrip delay.

TOP IT DEPARTMENT USE CASES



Automated Helpdesk
Classify tickets, route requests, draft resolutions from internal SOPs.



Log & Error Analysis
Real-time anomaly detection in system logs locally without external sending.



Secure Code Assistance
Offline code completion, debugging, script explanation (e.g., with DeepSeek-Coder).



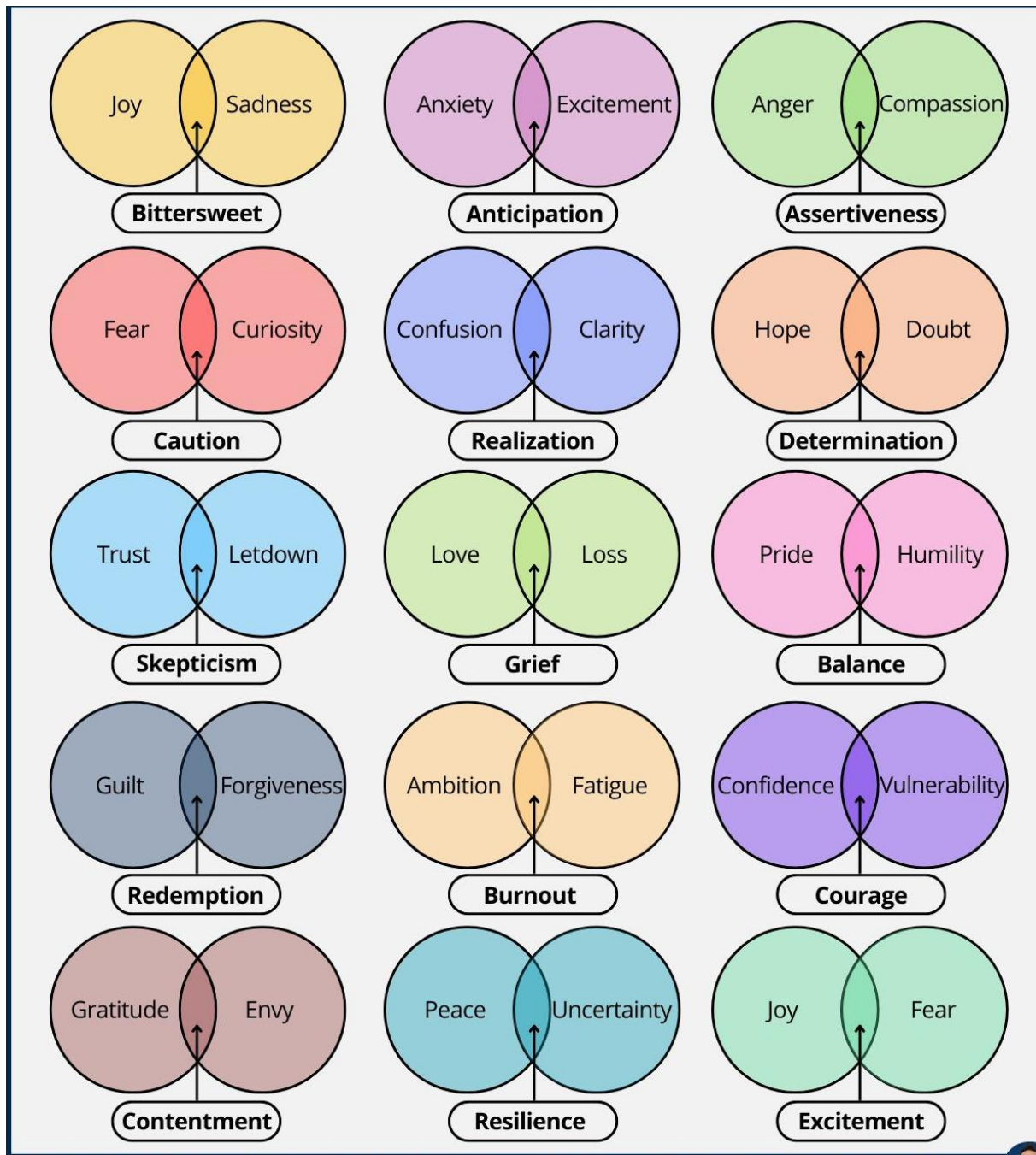
Private Knowledge Retrieval (RAG)
Turn internal Wiki/docs into a searchable, private AI assistant.

2026 MODELS TO WATCH (Staff Picks) & PRO TIP

- 1. Phi-4 (Microsoft):** Reasoning powerhouse for logic/coding.
- 2. Gemma 3 (Google):** Ultra-efficient, runs on standard laptops.
- 3. Llama 3.1 8B (Meta):** Industry standard for fine-tuning.
- 4. Qwen2.5-Coder (Alibaba):** Exceptional for shell scripting.



IT PRO TIP: Start testing today with tools like **OLLAMA** or **LM STUDIO**. No cloud account required – just your terminal & local hardware!



THE TRUTH ABOUT EMOTIONS

You're not "too emotional." You're just holding more than one truth at a time. Emotions aren't problems to fix; they're signals.

When you look closely, the strongest qualities usually come from mixed feelings: courage from confidence and vulnerability, resilience from peace and uncertainty, determination from hope and doubt.

These blends aren't glitches. They're wisdom taking shape. When you stop judging what you feel and start naming it, you can use it. Feel first, then listen.

That's how emotion becomes insight.



CYBER ROBOTICS

